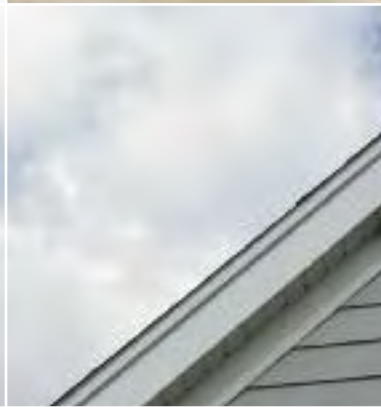
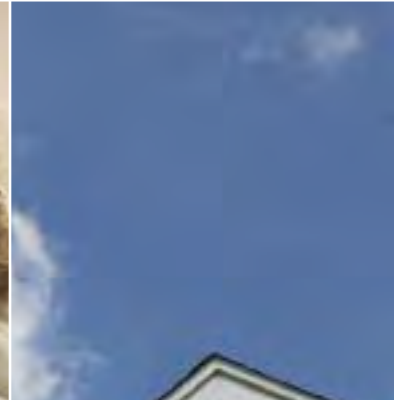


HOME PROTECTION PLAN COVERAGES & APPLICATION



PROHOME. HOME PROTECTION PLAN



RELAX. WE'VE GOT YOU COVERED.



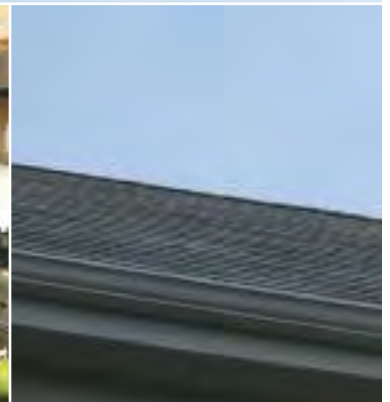
You can depend on The Warranty Group.

Established in 1996, TWG Home Warranty Services, Inc. is one of the largest home warranty providers in North America with a service network of over 25,000 screened and approved contractors nationwide.

With any program, it's critical to know who stands behind your service. Ours is backed by our own, affiliated insurance company, Virginia Surety Company, Inc., rated Excellent by AM Best. In addition, we are a subsidiary of The Warranty Group, Inc., the world's largest provider of service plans, with over \$5 billion in assets. With our unmatched underwriting, marketing and administrative competencies, no one can do what we do.



the warranty group®





A Home Protection Plan from The Warranty Group just makes sense.

Whether you're selling your house or purchasing your dream home, adding the Home Protection Plan from The Warranty Group is a smart choice. If you're the home seller, why take the chance of an unexpected costly repair during your listing? If you're buying the home of your dreams, chances are you're unaware of the exact age, maintenance or repair history of all the appliances and major systems in the home. Even if those systems and appliances are older but in good working condition, you can enjoy the peace of mind that comes with knowing that they are protected.*

Service that's second to none.

We know that when you need a repair, you want it done as quickly as possible without any hassles. A single call to our service representative evaluates the problem, schedules an on-site diagnosis and a repair solution from one of our many qualified service contractors. Rest assured, if we can't fix it, we'll replace it.

We add value to your home.

We evaluate our products and services regularly to stay ahead of the competition and we keep the cost of the Home Protection Plan competitive by requiring only one low service fee per call.*

Protection beyond compare.

What's more, we've added these innovative benefits that no other plan can match:

- Standard coverage for homes up to 12,000 sq. ft.
- Glass Breakage Coverage
- Home Lockout Reimbursement

Plus, these new optional coverage items are available to enhance the level of your protection:

- External Sewer Line
- External Water Line
- Surge Protection

Get the best Home Protection Plan coverage available exclusively from The Warranty Group and relax, knowing you're covered.



* Limitations of Coverage: The information in this brochure is intended to provide only an outline of the coverages and limitations of the Home Protection Plan program. For exact coverages, exclusions and limitations, please review the Home Protection Plan Agreement itself.



INSTRUCTIONS

1. Please fill out application completely.
2. Payment is due at time of closing.
3. This contract is non-cancelable & non-revocable in establishing the sale price of the home.
4. Contract holder must receive authorization prior to any work being performed or the claim will not be paid
5. Call **1-866-386-2468** for all claims and inquiries.

PROHOME HOME PROTECTION PLAN

Closing Date _____

Confirmation Number _____

ProHome Michigan

28345 Beck Rd.
Suite 103
Wixom, MI 48393

1-248-449-1100

www.prohomemichigan.com

Please submit your application by fax to:

1-248-449-1101

SELLER/BUYER DATA

Buyer Information

Applicant Name _____

Address _____

City / State / Zip _____

Phone Number _____

E-mail Address of the covered Buyer _____

SALES ASSOCIATE DATA

Office ProHome Michigan (92234367)

Phone 248-449-1100 Fax 248-449-1101

Sales Associate Name William Widmyer

Sales Associate E-Mail wwidmyer@prohomemichigan.com

UNIT TYPE, PRICE & DEDUCTIBLE

PLAN 1 - \$95 DEDUCTIBLE

1 Year Single-Family Home	\$375
2 Year Single-Family Home, Townhome.	\$700
1 Year Condominium	\$335
2 Year Condominium	\$620
4 Year New Construction (years 2-5)	\$429

PLAN 2 - \$50 DEDUCTIBLE

1 Year Single-Family Home	\$405
2 Year Single-Family Home, Townhome.	\$760
1 Year Condominium	\$365
2 Year Condominium	\$680
4 Year New Construction (years 2-5)	\$459

OPTIONAL COVERAGE

PLATINUM PROTECTION	1 YEAR	2 YEAR*
SELLER UPGRADE OPTION	<input type="checkbox"/> \$79	<input type="checkbox"/> N/A
BUYER UPGRADE OPTION	<input type="checkbox"/> \$79	<input type="checkbox"/> \$153
ADDITIONAL BUYER COVERAGE OPTIONS	1 YEAR	2 YEAR*
Additional Kitchen Refrigerator & Ice Maker	<input type="checkbox"/> \$20	<input type="checkbox"/> \$35
Clothes Washer & Dryer	<input type="checkbox"/> \$65	<input type="checkbox"/> \$125
External Sewer Line	<input type="checkbox"/> \$99	<input type="checkbox"/> \$193
External Water Line	<input type="checkbox"/> \$60	<input type="checkbox"/> \$115
Freezer	<input type="checkbox"/> \$35	<input type="checkbox"/> \$65
Mother-In-Law Unit	<input type="checkbox"/> \$135	<input type="checkbox"/> \$265
Pest Control	<input type="checkbox"/> \$50	<input type="checkbox"/> \$95
Surge Protection	<input type="checkbox"/> \$49	<input type="checkbox"/> \$93
Swimming Pool	<input type="checkbox"/> \$175	<input type="checkbox"/> \$345
Spa	<input type="checkbox"/> \$175	<input type="checkbox"/> \$345
Swimming Pool & Spa	<input type="checkbox"/> \$175	<input type="checkbox"/> \$345
Water Softener	<input type="checkbox"/> \$30	<input type="checkbox"/> \$55

*2 Year Optional Coverage available only with the 2 Year Home Protection Plan.

FEE

Buyer Coverage	\$ _____
Buyer Options	+ \$ _____
Total Due with Application	= \$ _____

PAYMENT

- Check (Make check payable to ProHome)
- Bill my credit card Visa MasterCard American Express Discover
- Cardholder Name _____
- Card Number _____
- Expiration Date _____
- Signature _____

ACCEPT COVERAGE

Purchaser acknowledges that they understand the sample terms and conditions of coverage and authorizes escrow agent to make a check payable to TWG Home Warranty Services, Inc. for total contract fee.

Buyer's Signature _____

Date _____



OTHER EXCLUSIONS MAY APPLY - READ YOUR CONTRACT CAREFULLY UPON RECEIPT

COVERAGE PERIOD

Coverage under this Agreement is only valid after Our acceptance and receipt of full payment.

For the home seller, coverage begins on the date You request coverage and continues for the Agreement Term indicated on the Declaration Page, or until close of sale, or termination of the listing, of the Covered Location listed on the Declaration Page whichever occurs first. For Seller's Platinum Protection coverage, payment is due at time of application.

For the home buyer, coverage begins at the close of sale and continues for the Agreement Term indicated on the Declaration Page. Payment is due at the close of sale and must be received by Us within twenty (20) days after the close of sale in order for coverage to be in force.

For the new construction home buyer, coverage begins on the first anniversary of the close of sale and continues for the Agreement Term indicated on the Declaration Page. Payment is due at the close of sale and must be received by Us within twenty (20) days after the close of sale in order for coverage to be in force.

For the existing home owner, coverage begins thirty (30) days after Your request for coverage and continues for the Agreement Term indicated on the Declaration Page. Payment is due to Us within twenty (20) days after receiving Your request for coverage in order for coverage to be in force.

CUSTOMER SERVICE - YOUR RESPONSIBILITIES

We will not pay for any services performed without Our prior approval. Notice of any Breakdown must be given to Us immediately upon discovery and during the coverage period.

When repair is required, You are to telephone Us at 1-866-386-2468. We will accept calls 24-hours a day, 7 days a week. You or the service provider will receive an authorization number for each Breakdown.

COVERAGE FOR THE HOME BUYER AND THE HOME SELLER

1. HEATING SYSTEM

CONDITION: Coverage is available on the home's primary heating system. Boilers must have automatic water feed. Steam heat must have low water cut-off valve.

COVERED: All components and parts (except as noted as NOT COVERED) located within the primary dwelling relating to: forced air systems • geothermal (ground source) and/or water source heat pump components • heat exchanger and/or combustion chamber • non-programmable thermostats.

NOT COVERED: Baseboard casings • portable units • solar heating systems • fireplaces and key valves • fireplace inserts • chimneys • filters • registers • humidifiers • dehumidifiers • grills • clocks • timers • heat lamps • fuel storage tanks • flues and vents • electronic or programmable thermostats • GFX or heat recovery systems • radiant floor tubing • outside or underground piping and components for geothermal and/or water source heat pumps • heat pumps (forced air) • gas packs.

Covers up to \$2,000 for the Buyer and up to \$500 for the Seller per 12 month period.

2. ATTIC FANS

COVERED: All components and parts, except as noted as NOT COVERED.

NOT COVERED: Any wiring or other electrical items located outside the perimeter of the principal dwelling • any loss due to water seepage along service cable • fire sprinkler systems • video or monitoring equipment.

3. BUILT-IN MICROWAVE OVEN

COVERED: All components and parts, except as noted as NOT COVERED.

NOT COVERED: Interior linings • door glass • light bulbs • clocks • shelves • portable or counter-top units • meat probe assemblies • rotisseries.

Covers up to \$400 for the Buyer and up to \$400 for the Seller per 12 month period.

4. DISHWASHER (Built-in or Portable)

COVERED: All components and parts, except as noted as NOT COVERED.

NOT COVERED: Racks • basket(s) • rollers.

Covers up to \$400 for the Buyer and up to \$400 for the Seller per 12 month period.

5. EMERGENCY HOTEL STAY

COVERED: In Case of an emergency Breakdown, We will reimburse You, up to the limits indicated on the Declaration Page, to stay in a hotel.

NOT COVERED: Hotel stays when there is not Emergency • Any hotel costs other than the room charge (e.g. food, room service, phone charges, gratuities, movie rentals, etc.) • Any incidental costs due to packing, moving, lost or stolen items • anything not listed in covered section.

Covers up to \$50 per Night for 3 Nights per 12 month period.

6. EXHAUST FANS

COVERED: Motors • switches • controls • bearings • blades • remote control units.

NOT COVERED: Belts • shutters • filters • components not listed in the covered section.

7. GARBAGE DISPOSAL

COVERED: All components and parts.

8. INTERNAL ELECTRICAL SYSTEM

COVERED: General wiring • inside fuse box • inside circuit breaker panels • switches and receptacles located within the interior of the home.

NOT COVERED: Meter boxes • fixtures • alarms • intercoms • direct current (DC) wiring or components • power failure or surge • telephone wiring • any wiring or other electrical items located outside the perimeter of the principal dwelling and attached garage • any loss due to water seepage along service cable • conditions of inadequate wiring capacity or overload • low voltage wiring or relays • control panels • outside mounted circuit breaker panel • obstructed access to cover equipment • components not listed in the covered section.

Covers up to \$400 for the Buyer and up to \$400 for the Seller per 12 month period for concealed wiring.

9. INTERNAL PLUMBING SYSTEM

COVERED: Leaks and breaks of water, drain, gas, waste or vent lines • toilet tanks, bowls and mechanisms (replaced with builder's standard as necessary) • toilet wax ring seals • valves for shower, tub, and diverter • angle stops • risers and gate valves • built-in bathtub whirlpool motor and pump assemblies • instant hot water dispenser • faucets and fixtures.

NOT COVERED: Leaks, breaks, collapse or damage to water, drain, gas, waste or vent lines caused by freezing, roots, rocks, or earth movement • bathtubs, shower enclosures and base pans • sinks • toilet lids and seats • caulking or grouting • septic tanks • water softeners • pressure regulators • inadequate or excessive water pressure • sewage ejector pumps • holding or storage tanks • saunas or steam rooms • stoppages • leach beds • fire sprinkler systems • lawn sprinklers • battery back-up sump pumps • frost free line • plumbing, piping, fixtures or any other item listed as covered that is located outside the foundation of the home • components not listed in the covered section.

Covers up to \$400 for the Buyer and up to \$400 for the Seller per 12 month period for concrete-encased or concealed piping. Covers up to \$400 for the Buyer and up to \$400 for the Seller per 12 month period for plumbing fixtures and faucets.

10. STOPPAGES

COVERED: Clearing of stoppages in drain, vent, and sewer lines up to 125 feet from access point.

NOT COVERED: All components and parts that are not listed as covered.

11. RANGE/OVEN/COOKTOP (Gas or Electric; Built-in, Portable or Free Standing)

COVERED: All components and parts, except as noted as NOT COVERED.

NOT COVERED: Clocks or light bulbs (unless they effect the function of the oven) • meat probe assemblies • rotisseries • racks • handles • knobs • sensi-heat burners will only be replaced with standard burners.

Covers up to \$400 for the Buyer and up to \$400 for the Seller per 12 month period.

12. WATER HEATER (Gas, Electric or Propane)

COVERED: All components and parts, except as noted as NOT COVERED.

NOT COVERED: Solar or solar assisted water heaters • solar components • holding or storage tanks • noise • fuel storage tank and energy conservation unit • flues and vents • oil fired water heaters • failure caused by sediment or mineral build-up • earthquake straps • mounting stands • pool and/or spa water heaters.

ADDITIONAL COVERAGE FOR THE HOME BUYER

13. AIR CONDITIONER

CONDITION: Coverage is available on the home's primary Air Conditioner system and capacities not exceeding five (5) tons.

COVERED: All components and parts (except as noted as NOT COVERED) relating to: ducted electric central air conditioning • ducted electric wall air conditioning • water evaporative coolers. If We determine non-compatibility of specific components due to an efficiency upgrade requirement to 13 SEER (Seasonal Energy Efficiency Ratio) or 7.7 HSPF (Heating Seasonal Performance Factor) of a covered ducted electric central air conditioning system, We will upgrade the following components to be compatible with the new ducted electric central air conditioning system: plenum • indoor electrical connection • condenser • evaporator coils and drain pans • refrigerant lines • duct connections • secondary drain pans and lines • air handling transition • air handling unit.

NOT COVERED: Natural gas air conditioning systems • condenser casings • registers • grills • filters • evaporated cooling pads • electronic air cleaners • window units • non-ducted wall units • water towers • roof jacks or stands • flues and vents • improperly sized air conditioning unit • chillers • humidifiers • dehumidifiers • electronic or programmable thermostats • outside or underground piping and components for geothermal and/or water source heat pumps.

Covers up to \$2,000 per 12 month period.

14. HEAT PUMP (Including Gas Pack)

CONDITION: Coverage is available on the home's primary combined cooling and heating (e.g. heat pump or gas pack) systems and capacities not exceeding five (5) tons.

COVERED: All components and parts (except as noted as NOT COVERED) relating to heat pumps or gas packs that heat or cool the home • non-programmable thermostats. If We determine non-compatibility of specific components due to an efficiency upgrade requirement to 13 SEER (Seasonal Energy Efficiency Ratio) or 7.7 HSPF (Heating Seasonal Performance Factor) of a covered or heat pump or gas pack, We will upgrade the following components to be compatible with the new ducted electric central air conditioning system or heat pump: plenum • indoor electrical connection • condenser • evaporator coils and drain pans • refrigerant lines • duct connections • secondary drain pans and lines • air handling transition • air handling unit.

Actual Terms & Conditions will be sent to the purchaser once the application has been received and processed.

NOT COVERED: Natural gas air conditioning systems • condenser casings • registers • grills • filters • evaporated cooling pads • electronic air cleaners • window units • non-ducted wall units • water towers • roof jacks or stands • flues and vents • improperly sized air conditioning unit • chillers • humidifiers • dehumidifiers • electronic or programmable thermostats • outside or underground piping and components for geothermal and/or water source heat pumps.

Covers up to \$2,000 per 12 month period.

15. BURGLAR AND FIRE ALARM

COVERED: All components and parts, except as noted as NOT COVERED.
NOT COVERED: Any wiring or other electrical items located outside the perimeter of the principal dwelling • any loss due to water seepage along service cable • fire sprinkler systems • video or monitoring equipment.

Covers up to \$400 per 12 month period.

16. CENTRAL VACUUM SYSTEM

COVERED: All components and parts, except as noted as NOT COVERED.
NOT COVERED: Ductwork • any accessories.

Covers up to \$400 per 12 month period.

17. DOORBELL SYSTEM

COVERED: All components and parts, except as noted as NOT COVERED.
NOT COVERED: Any Audio/Video surveillance systems, intercom systems, or computer/monitors working in conjunction with the doorbell system.

18. ELECTRONIC AIR CLEANER (Permanently Mounted)

COVERED: Transformer • power pack switches • lights • wires • cleaning elements.
NOT COVERED: Mesh filters • self-cleaning units • any components of an electronic air cleaner that is not permanently mounted • components not listed in the covered section.

Covers up to \$400 per 12 month period.

19. GARAGE DOOR OPENER

COVERED: All components and parts, except as noted as NOT COVERED.
NOT COVERED: Garage doors • counterbalance mechanisms (including cables and springs) • tracks • rollers • remote sending units.

20. GLASS BREAKAGE

COVERED: External windows, including the frame.

Covers up to \$100 per 12 month period.

21. HUMIDIFIER (Permanently Mounted)

COVERED: Pans • housings • motors • fans • humidistat • transformer • valves • lines.
NOT COVERED: Humidifier pads • media elements • brushes • atomizers • back flush units • any components of a humidifier that is not permanently mounted to the furnace • components not listed in the covered section.

22. KITCHEN REFRIGERATOR (OR ADDITIONAL REFRIGERATOR) AND ICE MAKER

COVERED: All components and parts of the refrigerator including integral freezer or ice maker except as noted as NOT COVERED.
NOT COVERED: Racks • shelves • beverage dispensers and their respective equipment • interior thermal shells • freezers which are not an integral part of the refrigerator • food spoilage • light bulbs.

Covers up to \$400 per 12 month period.

23. LIGHTING FIXTURES

COVERED: All components and parts of indoor lighting fixtures.

Covers up to \$400 per 12 month period.

24. LOCKOUT REIMBURSEMENT

COVERED: Cost for a licensed locksmith to allow You to enter the address listed on the Declaration Page.

Covers up to \$100 per 12 month period.

25. ROOF LEAK REPAIR

COVERED: Water leaks in roof structure including flashing.
NOT COVERED: Pre-existing leaks • gutters • drain lines • roof-mounted installations (samples include: skylights, atriums, antennas, satellite dish) • leaks caused by the addition of a roof-mounted installation • leaks associated with leaks in any deck or balcony • leaks which result from or are caused by any of the following: missing and/or broken shingles or tiles, damage due to persons walking or standing on the roof • construction or repairs not performed in a workmanlike manner • failure to perform normal roof maintenance • acts of nature (including but not limited to; tornado, hurricane, hail, wind, earthquake and lightning).

Covers up to \$500 per 12 month period.

26. SEPTIC SYSTEM

A septic certification must be completed within sixty (60) days prior to the start of coverage. If this certification is not completed on Your behalf, You must have an independent, licensed contractor perform the certification. A copy of the certification documenting that the system was functioning properly at the time of inspection must be provided to Us prior to any septic coverage being effective.
COVERED: Ejector pump • septic tank • line from house.
NOT COVERED: Collapse of or damage to line from house caused by roots, rocks or earth movement • tile fields • effluent pumps • leach beds • cesspools • aerobic waste water systems • insufficient capacity • clean out • components not listed in the covered section.

Covers up to \$400 per 12 month period.

27. SUMP PUMP

COVERED: All components and parts related to a primary sump pump except as noted as NOT COVERED.
NOT COVERED: Auxiliary sump pumps • battery back-up sump pumps • any sump pump not permanently installed.

28. WELL PUMP

COVERED: All components and parts of well pump utilized for primary dwelling only, except as noted as NOT COVERED.
NOT COVERED: Well casings • pressure tanks • piping or electrical lines leading to or connecting well pump and main dwelling • holding or storage tanks • re-drilling of wells.

Covers up to \$400 per 12 month period.

OPTIONAL COVERAGE FOR THE HOME BUYER AND THE HOME SELLER

29. PLATINUM PROTECTION UPGRADE

CONDITION: Coverage provided by the Platinum Protection Option is in addition to the base coverage offered under this Agreement but, does not exceed the coverage limits stated in this Agreement, for access, diagnosis, and repair or replacement of the covered system or appliance. For coverage that is an option, that option must also be purchased to receive coverage under platinum protection.

a) AIR CONDITIONING

COVERED: Filters • registers • grills • programmable thermostats • refrigerant recapture.

b) BUILT-IN MICROWAVE OVEN

COVERED: Interior lining • door glass • clocks • shelves.

c) CODE VIOLATIONS

LIMITATION: We will pay up to the limit indicated on the Declaration Page to correct a code violation made necessary by the repair or replacement a system or appliance under this Agreement.

Covers up to \$250 per 12 month period.

d) DISHWASHER

COVERED: Racks • baskets • rollers

e) HEAT PUMP (Including Gas Packs)

COVERED: Filters • registers • grills • programmable thermostats • refrigerant recapture.

f) HEATING SYSTEMS

COVERED: Registers • grills • filters • heat-lamps • programmable thermostats.

g) IMPROPER INSTALLATION OR REPAIR

We will cover a Breakdown to a system and appliance due to improper installation or repair prior to the Agreement effective date.

h) INTERIOR PLUMBING SYSTEM

COVERED: Faucets • shower heads and shower arms • hose bibs • toilets.

Actual Terms & Conditions will be sent to the purchaser once the application has been received and processed.

i) MISMATCHED SYSTEMS

We will cover a Breakdown to a system due to insufficient size or efficiency, if the system was installed prior to the Agreement effective date.

j) RANGE/OVEN/COOKTOP

COVERED: Clocks • rotisseries • racks • handles • knobs • dials • interior lining.

k) REMOVAL OF DEFECTIVE EQUIPMENT

When replacing a covered system or appliance due to a Breakdown, We will pay for the removal or disposal of the system or appliance.

l) UNKNOWN PRE-EXISTING

We will cover a Breakdown to a system and appliance due to a pre-existing condition provided it could not be detected by a visual inspection or mechanical test.

m) WATER HEATER

COVERED: Repair or replacement if Breakdown is caused by sediment build-up. Such repair or replacement for sediment build-up shall not be subject to item 1 Sub-Section d of the exclusions.

OPTIONAL COVERAGE (AVAILABLE ONLY TO THE HOME BUYER)

30. CLOTHES WASHER AND DRYER

a) CLOTHES WASHER

COVERED: All components and parts, except as noted as NOT COVERED.

NOT COVERED: Plastic mini-tubs • soap dispensers • filter screens • knobs and dials • damage to clothing.

b) CLOTHES DRYER

COVERED: All components and parts, except as noted as NOT COVERED.

NOT COVERED: Venting • lint screens • knobs and dials • damage to clothing.

Covers up to \$400 each per 12 month period.

31. EXTERNAL SEWER LINE

COVERED: All parts, material, and labor to repair, replace, or unblock Your external sewer line. The determination of whether and with what to repair or replace your sewer line is at Our discretion. Coverage also includes excavation, paving, loaming, and seeding of the lawn as required in the area of the repair or replacement.

NOT COVERED: Pressure reducing valve • booster pump • curb valve, curb box adapter and/or cover (unless owned by You) • lawn or fire sprinkler systems • any leaks inside the premises beyond the main sewer clean out in the house • sod, shrubbery, landscaping, flowerbeds, trees, or mulch that must be moved in order to repair a sewer leak or perform other work will be replaced with grass seed • any type of sewer odors emitting from the sewer main, system, or sewer line that seep into the drainage or venting system of a house.

Covers up to \$2,500 per 12 month period.

32. EXTERNAL WATER LINE

COVERED: All parts, material, and labor to repair or replace your leaking external water line. The determination of whether and with what to repair or replace your leaking water line is at Our discretion. Coverage also includes excavation, paving, loaming, and seeding of the lawn as required in the area of the repair or replacement.

NOT COVERED: Main shut-off house valve • pressure reducing valve • booster pump • meter pit frame or cover • curb valve, curb box adapter and/or cover (unless owned by You) • lawn or fire sprinkler systems • any leaks inside the premises beyond the main shut-off valve in the house • sod, shrubbery, landscaping, flowerbeds, trees, or mulch that must be moved in order to repair a service leak or perform other work will be replaced with grass seed.

Covers up to \$2,500 per 12 month period.

33. FREEZER

COVERED: All components and parts of chest or upright freezers, except as noted as NOT COVERED.

NOT COVERED: Racks • shelves • ice makers and ice crushers • beverage dispensers and their respective equipment • interior thermal shells • food spoilage.

34. MOTHER-IN-LAW UNIT

COVERED: Items indicated as base coverage on the Declaration Page that are:

- Located within the confines of the Mother-in-Law Unit;
- Become inoperative due to normal wear and tear; and
- Are in place and in proper working order on the effective date of coverage of this Agreement.

CONDITION: Any Optional Coverage intended for the Mother-In-Law Unit will require a separate purchase of the option, outside of any optional purchases for the main dwelling.

35. PEST CONTROL

COVERED: Roaches • ants (except Fire, Pharaoh and Carpenter varieties) • silverfish • earwigs • mice • rats • crickets • ground beetles • pillbugs • sowbugs • spot treatment for subterranean termite infestation (Spot treatment is defined as treatment of a limited, defined area less than ten (10) linear feet that is intended to protect a specific location).

NOT COVERED: Fungus • wood-boring beetles • pre-existing termite infestation • spiders • ants (Fire, Pharaoh and Carpenter varieties) • pre-existing termite infestation (multiple or whole house infestation) • repair or replacement of damage caused by subterranean termites • any pest not specifically listed above as covered.

Covers up to \$1,000 per 12 month period.

36. SURGE PROTECTION

COVERED: A Breakdown caused directly by lightning or an increase of artificially generated electrical current from outside the home.

NOT COVERED: Breakdown caused by or resulting from the following: a third party's negligence, a power surge arising from an event occurring on a third party's property, manufacturer defects, wear and tear, insect, vermin, pets, misuse, abuse, negligence, dampness, humidity, dryness, flooding, wind, ice, fire, hail, freezing, earthquakes, earth movement, corrosion, rust, trees or tree branches.

Covers up to \$1,000 per 12 month period.

37. SWIMMING POOL AND/OR SPA EQUIPMENT

CONDITION: If swimming pool and spa (including exterior hot tub and whirlpool) utilize common equipment, both can be covered by selecting and paying for the swimming pool/spa package (common equipment). If they do not utilize common equipment, then only the optional swimming pool or spa, which is selected and paid for, will be covered. Coverage is limited to a single swimming pool or spa.

COVERED: All components and parts of the heating, pumping and filtration systems, except as noted as NOT COVERED.

NOT COVERED: Pool sweep motors • pool covers • lights • liners • concrete-encased or underground electrical, plumbing or gas lines • cleaning equipment • chlorinators • any attachment not associated with the primary function of the covered equipment • structural defects • solar equipment • jets • fuel storage tanks • built-in or detachable cleaning equipment, including pop-up heads, turbo valves, creepy crawlers and the like • disposable filtration mediums.

Covers up to \$1,500 per 12 month period.

38. WATER SOFTENER

COVERED: All components and parts of a domestic water softener except as noted as NOT COVERED.

NOT COVERED: Conditions of insufficient or excessive water pressure, color, or purity of water • water filters • salt replacement • rust or corrosion • normal maintenance responsibilities • rental units • water purification systems.

Covers up to \$600 per 12 month period.

LIMITS OF LIABILITY

- Coverage for access, diagnosis and repair or replacement for each system and appliance as listed on the Declaration Page.
- When repairing or replacing an Air Conditioner/Cooler or Heat Pump system to maintain compatibility with equipment manufactured to be 13 SEER or 7.7 HSPF compliant, or compliant with any higher SEER of HSPF requirements, We are not responsible or liable for upgrades, components, parts, or equipment required due to:
 - Incompatibility of the existing equipment with the required system, appliance, component, or any part thereof, except for as noted in Section G "Coverage Description," Air Conditioner and Combined Cooler.
 - Any new type of chemical or material utilized to run the replacement equipment including but not limited to, differences in technology, refrigerant requirements, or efficiency as mandated by federal, state or local government.
 - Cost of construction, carpentry, or other modifications made necessary by the existing equipment or installing different equipment.

COVERED ITEMS	BUYER	SELLER
Heating System	✓	✓
Hot Water Heat System	✓	✓
Attic Fan	✓	✓
Built-In Microwave	✓	✓
Dishwasher	✓	✓
Emergency Hotel Stay	✓	✓
Exhaust Fans	✓	✓
Garbage Disposal	✓	✓
Internal Electrical System	✓	✓
Internal Plumbing System	✓	✓
Built-In Whirlpool Motor/Pump Assemblies	✓	✓
Instant Hot Water Dispenser	✓	✓
Polybutylene Piping	✓	✓
Range / Oven / Cooktop	✓	✓
Stoppages	✓	✓
Water Heater	✓	✓
Air Conditioner	✓	N/A
Heat Pump (Including Gas Pack)	✓	N/A
Burglar & Fire Alarm	✓	N/A
Central Vacuum System	✓	N/A
Doorbell System	✓	N/A
Electronic Air Cleaner	✓	N/A
Garage Door Opener	✓	N/A
Glass Breakage	✓	N/A
Humidifier	✓	N/A
Kitchen Refrigerator & Ice Maker	✓	N/A
Lighting Fixture	✓	N/A
Lockout Reimbursement	✓	N/A
Roof Leak Repair	✓	N/A
Septic System (Requires Certification)	✓	N/A
Sump Pump	✓	N/A
Well Pump	✓	N/A

All Seller Coverage is up to 180 days.

HOME PROTECTION PLAN COSTS	PLAN 1	PLAN 2
	\$95 Deductible	\$50 Deductible
1 Year Single-Family Home, Townhome or Mobile Home Under 5,000 sq. ft.	\$375	\$405
2 Year Single-Family Home, Townhome or Mobile Home Under 5,000 sq. ft.	\$700	\$760
1 Year Single-Family Home, Townhome or Mobile Home 5,001 - 8,000 sq. ft.	\$599	\$649
2 Year Single-Family Home, Townhome or Mobile Home 5,001 - 8,000 sq. ft.	\$1,148	\$1,248
1 Year Single-Family Home, Townhome or Mobile Home 8,001 - 12,000 sq. ft.	\$749	\$899
2 Year Single-Family Home, Townhome or Mobile Home 8,001 - 12,000 sq. ft.	\$1,448	\$1,748
1 Year Condominium	\$335	\$365
2 Year Condominium	\$620	\$680
4 Year New Construction (Years 2-5)	\$429	\$459
1 Year Duplex	\$599	\$649
1 Year Triplex	\$699	\$799
1 Year Fourplex	\$899	\$999

**Seller Coverage is up to 180 days.

PLATINUM PROTECTION SELLER/BUYER UPGRADE OPTION		
COVERS	1 YEAR	2 YEAR ^{††}
Air Conditioning (Buyer Only)	\$79	\$153
Built-In Microwave Oven		
Code Violations		
Dishwasher		
Heat Pump, Including Gas Packs (Buyer Only)		
Heating Systems		
Improper Installation or Repair		
Interior Plumbing System		
Mismatched Systems		
Range / Oven / Cooktop		
Removal of Defective Equipment		
Unknown Pre-Existing		
Water Heater		

^{††}2 Year Optional Coverage available only with the 2 Year Home Protection Plan.

ADDITIONAL BUYER COVERAGE OPTIONS		
OPTION	1 YEAR	2 YEAR ^{††}
Additional Kitchen Refrigerator & Ice Maker	\$20	\$35
Clothes Washer & Dryer	\$65	\$125
External Sewer Line	\$99	\$193
External Water Line	\$60	\$115
Freezer	\$35	\$65
Mother-In-Law Unit	\$135	\$265
Pest Control	\$50	\$95
Surge Protection	\$49	\$93
Swimming Pool	\$175	\$345
Spa	\$175	\$345
Swimming Pool & Spa (Common Equipment)	\$175	\$345
Water Softener	\$30	\$55

^{††}2 Year Optional Coverage available only with the 2 Year Home Protection Plan.

LIMITATIONS OF COVERAGE
The information in this brochure is intended to provide only an outline of the coverages and limitations of the Home Protection Plan Program. For exact coverages, exclusions and limitations, please review the Home Protection Plan Agreement itself. Purchaser of Seller Coverage agrees to purchase Buyer Coverage if, and when, property sale closes.



All products and services are provided by TWG Home Warranty Services, Inc., except in CA, FL, NV, and VA. Products in those states are provided by Virginia Surety Company, Inc., except in FL where they are provided by ServicePlan of Florida, Inc. TWG Home Warranty Services, Inc., Virginia Surety Company, Inc. and ServicePlan of Florida, Inc. are all affiliates.